



ONE MARBLE ARCH

20,000 sq ft of flagship
retail space over 3 floors,
prominently placed next to
Marble Arch and Hyde Park.

A development by





Maximum Visibility

An eye catching, 10m double-height corner site connecting buzzing Marble Arch to Hyde Park and Europe's busiest shopping street, Oxford Street.

Make lasting impressions and extraordinary experiences across three floors of high quality flexible space, with floor to slab heights of up to 5.3m.

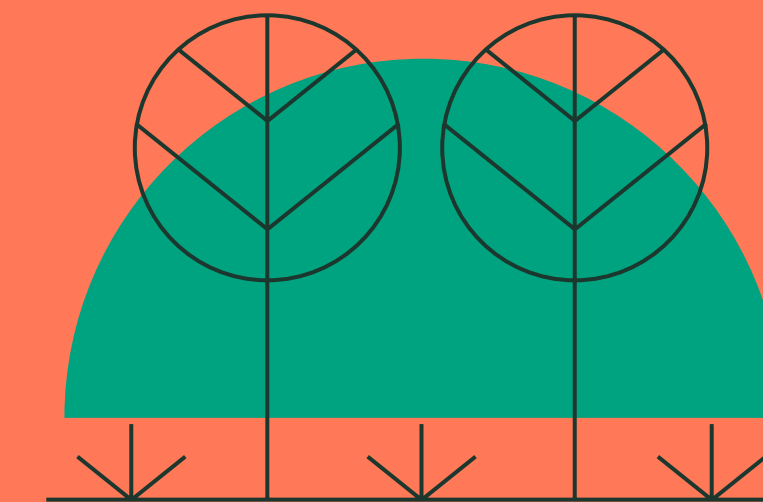


Maximum Versatility

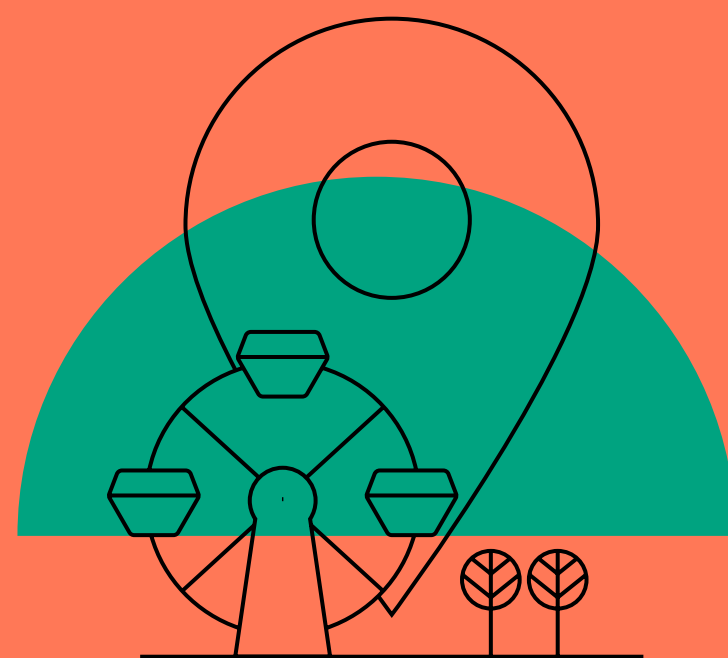
Maximum Exposure



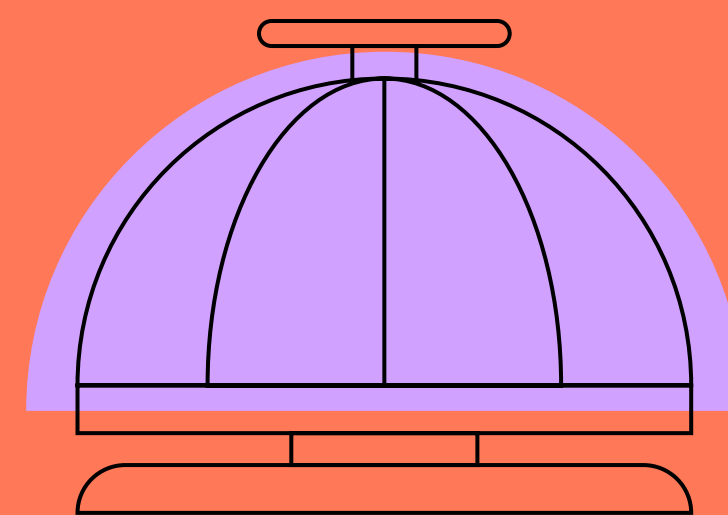
46 million entry and exits per annum from Marble Arch and Bond Street stations combined



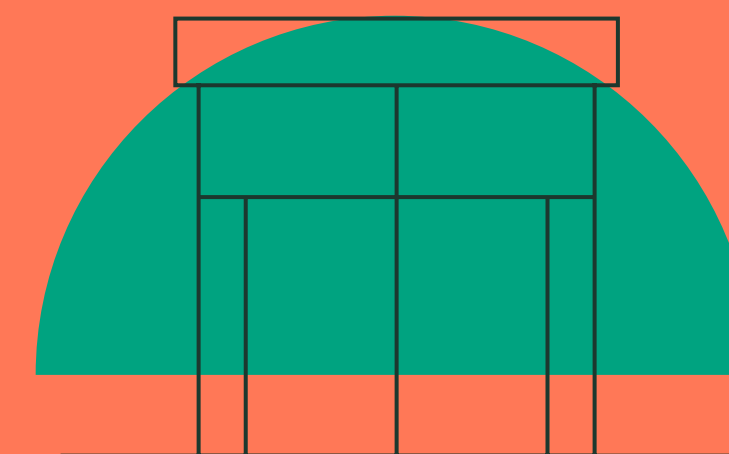
12.8 million visitors to Hyde Park each year



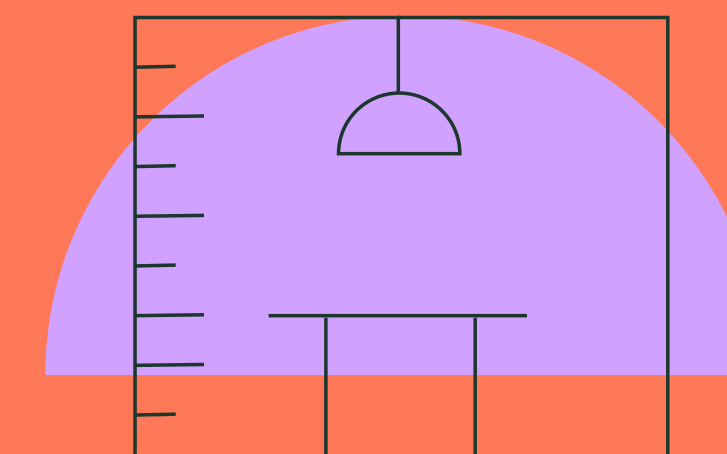
Winter Wonderland attracts in excess of 2.5 million unique visitors every year



5,600 hotel rooms (including 1,700+ luxury hotel rooms) within the 0.5-mile radius of Marble Arch

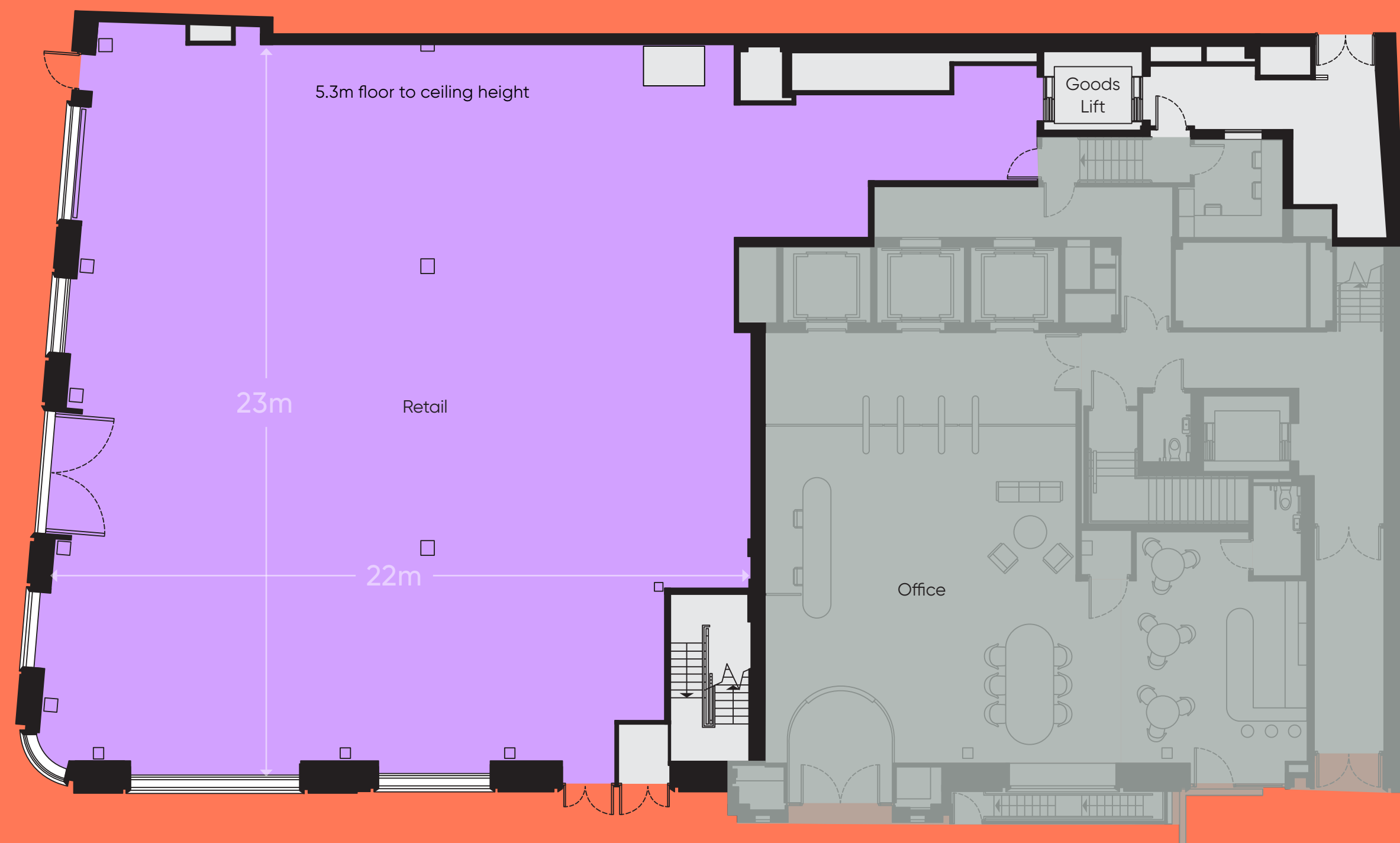


10 metre, double-height retail frontage



5.3 metre floor to slab heights to ground floor

MARBLE ARCH



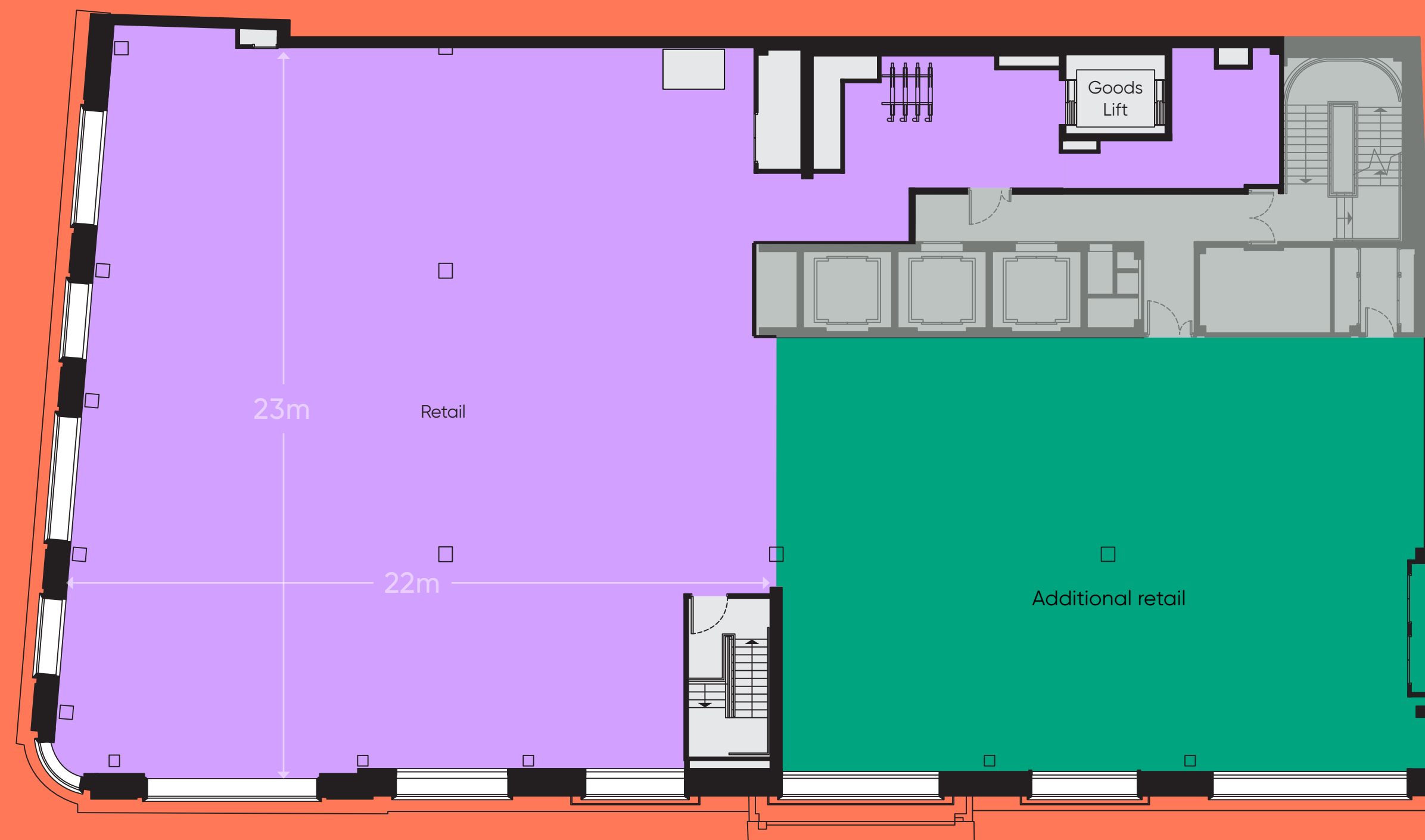
GREAT CUMBERLAND PLACE



Ground Floor

Retail	5,558 sq ft	516 sq m
Floor to ceiling height	5.47 m	

MARBLE ARCH



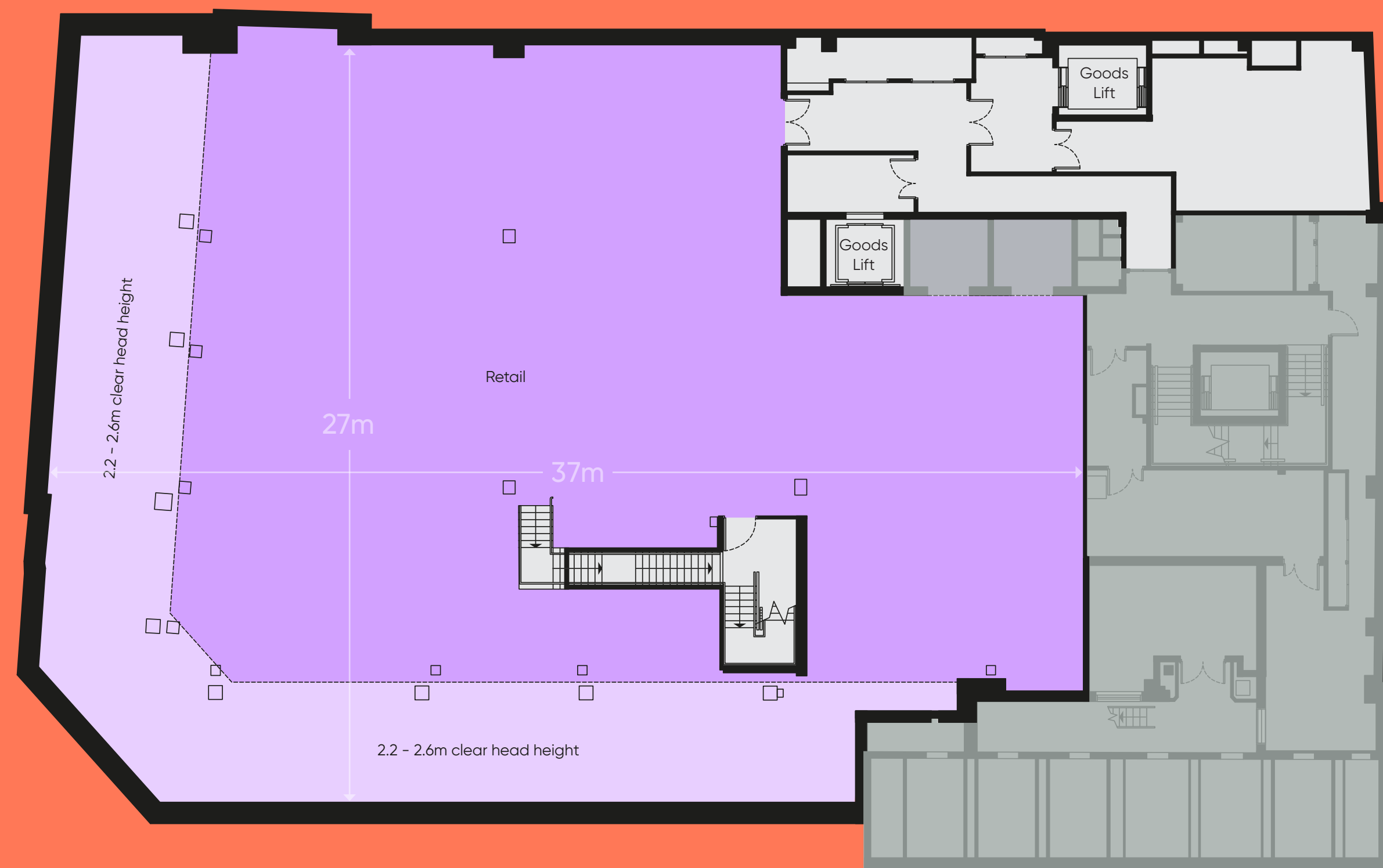
GREAT CUMBERLAND PLACE



First Floor

Retail	5,518 sq ft	513 sq m
Additional Retail*	2,987 sq ft	278 sq m
Total*	8,505 sq ft	791 sq m
Floor to ceiling height	4.17 m	

MARBLE ARCH



GREAT CUMBERLAND PLACE



Lower Ground Floor

Retail	9,144 sq ft	850 sq m
Total	23,207 sq ft	2,156 sq m
Floor to ceiling height*	3.82 m	



ONE
MARBLE
ARCH

In good company

RETAILERS

1. Footlocker
2. Primark
3. Omega
4. Tag Heuer
5. Dyson
6. & other stories
7. Adidas
8. Barbour
9. Asics
10. Boss
11. M&S
12. Selfridges

TRANSPORT

1. Marble Arch Underground
2. Bond Street Underground & Crossrail

HOTELS

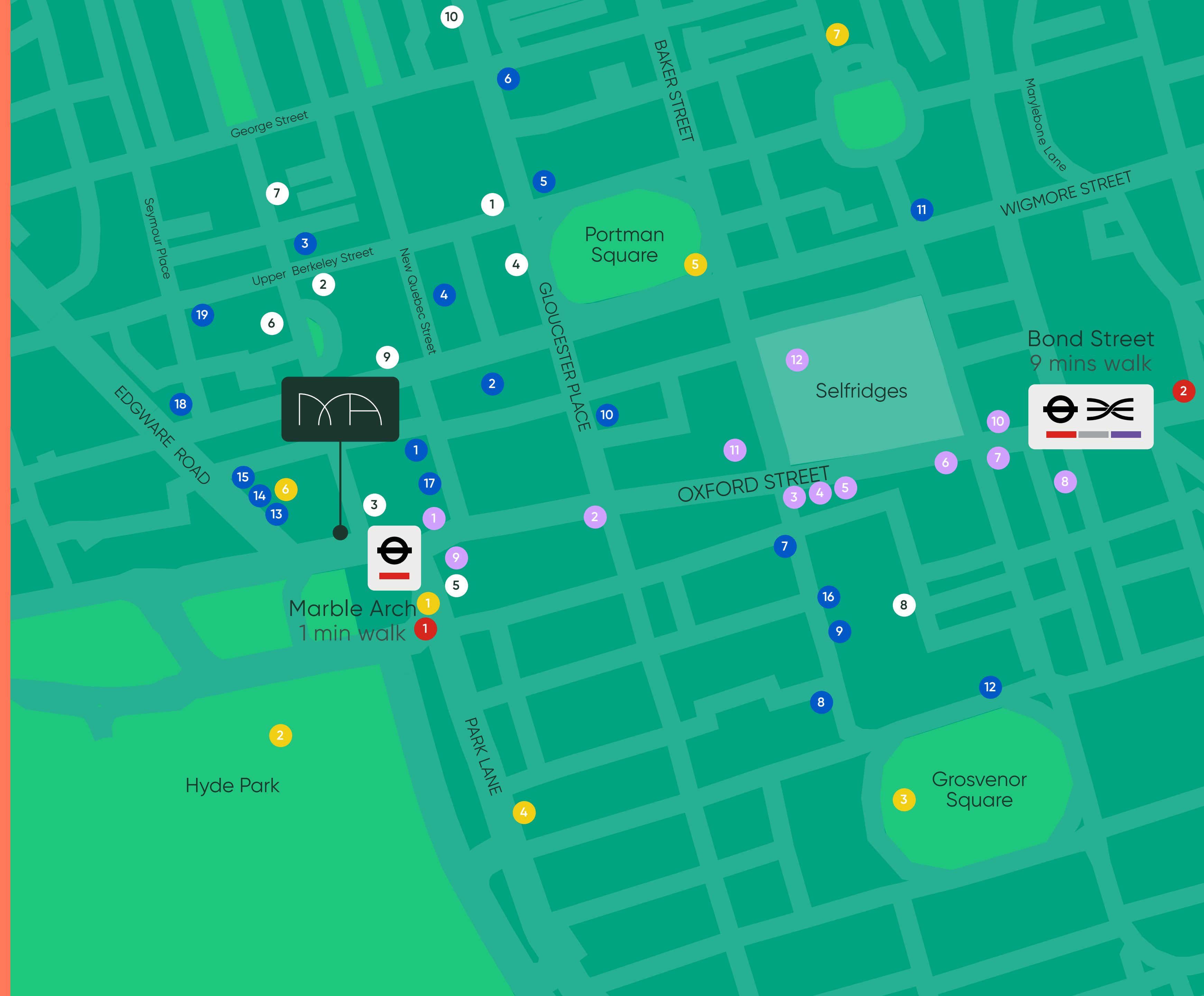
1. Nobu Hotel London Portman Square
2. The Montcalm, Marble Arch
3. Hard Rock Hotel
4. Hyatt Regency London The Churchill
5. Marriott Park Lane
6. The Marble Arch London
7. The Prince Akatoki
8. The Beaumont Hotel
9. The Zetter Townhouse
10. Z at Gloucester Place

RESTAURANTS AND CAFES

1. Chourangi
2. KOL
3. Home Grown Club
4. The Grazing Goat
5. Home House
6. Santo Mare seafood
7. Roka Mayfair
8. North Audley Canteen
9. Ivy Asia
10. Steak and Lobster
11. Zoilo
12. Lucky Cat
13. Wagamama
14. Gentlemen Barista
15. Feya
16. Mercato Metropolitano
17. Blank Street Coffee
18. The Italian Greyhound
19. The Portman Pub

POINTS OF INTEREST

1. Marble Arch
2. Hyde Park
3. Grosvenor Square
4. Park Lane
5. Portman Square
6. Frameless
7. The Wallace Collection



Get in touch with our retail agents

KENNINGHAM
RETAIL

David Kenningham

dk@kenninghamretail.com

+44 (0) 7785 956 977

Mark Serrell

marks@kenninghamretail.com

+44 (0) 7885 389 435

Hannah Barter

hannahb@kenninghamretail.com

+44 (0) 7753 312 591



Duncan Gilliard

duncan.gilliard@cushwake.com

+44 (0) 7881 501 164

Freddie Steel

freddie.steel@cushwake.com

+44(0) 7885 239 688

onemarblearch.com

IMPORTANT NOTICE RELATING TO THE MISREPRESENTATION ACT 1967 AND THE PROPERTY MISDESCRIPTIONS ACT 1991 Kenningham Retail and Cushman & Wakefield LLP on behalf and for the lessors of this property whose agents they are, give notice that: The particulars are set out as a general outline only for guidance of intending lessees and do not constitute, nor constitute part of, an offer or contract. October 2022. SUBJECT TO CONTRACT.

A development by



Situated in the heart of central London, The Portman Estate comprises 110 acres of prime commercial, retail and residential space with over 150 shops and restaurants and includes premium frontages on Oxford Street, Baker Street, Edgware Road and Marble Arch.

Renowned for our Georgian architecture and bustling neighbourhood, the Estate is a popular destination of choice for visitors from around the globe and offers a vibrant, diverse and welcoming community for all those who live and work here.